



Charlton Church of England Primary School

Newsletter

Listening. Encouraging. Forgiving. Thoughtful. Patient. Sharing.

'Transforming lives through God's embrace.'



Date:

Friday 28th November 2025

Issue Number:

4

Dear Parents and Carers,

I am delighted to share some of the exciting activities and achievements happening at Charlton CE Primary School this term.

Our School Council has chosen to support The Red Cross and has planned two fundraising initiatives. On Friday 5th, pupils are invited to come to school in a Onesie or PJs, with a suggested donation of £1. Additionally, the School Council will be running a stall at the Christmas Fair to raise further funds for this important charity.

Our Early Years and Key Stage 1 pupils have been diligently rehearsing for the nativity play. We are looking forward to this wonderful performance and invite you to check the dates for all Christmas activities at the end of the newsletter, as it promises to be a very busy term.

On 17th December, we will be taking the whole school to the Folkestone Pantomime. If you have not already done so, please complete the permission slip and make the payment through the MCAS app.

Year 4 have had an engaging few weeks. They visited Pencester Gardens and The Base, where they had the exciting opportunity to use the sprung floor during their PE lesson. They also created beautiful lanterns for the Winter Parade in Dover.

We are continuing to introduce Talk for Writing, which has been met with great enthusiasm from the pupils. They are eagerly learning their class texts, and we encourage you to ask your child to retell their class story at home.

Parents Evenings have now been completed. If you have not yet had the chance to meet your child's teacher, please contact the school office to arrange a meeting or telephone call.

Thank you for your continued support.

Mrs Moat

Baby and Toddler Group

Baby and Toddler Group will run every Thursday morning during term time between 9am—10am



- ◆ Drink and snack for the little ones
- ◆ Activities, games and toys
- ◆ A chance to chat and meet new people



The first session will be held on Thursday 26th September

Please keep spreading the word—this is open to the whole community so please do bring friends and relatives with little ones.

Mrs Hazelden and Miss Kew



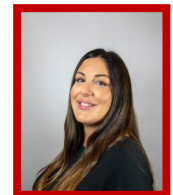
Pastoral Lead

Message from Miss Kew

Contact details:

Phone: school number and select line 2

Email: kkew@charltonprimary.school



As the Pastoral Lead at Charlton, I am available to support families in many different ways, whether this be any concerns for your child or your own wellbeing, difficulties at home and financial support which could consist of:

Food Bank: If anyone would like to access the food bank please do contact Miss Kew. **Fuel Bank:** This is accessible for pre-paid meters. Again, please do contact Miss Kew if you would like support with this.

Any support offered to you will always be treated with the strictest confidence.

SEND Space with Mrs Martin

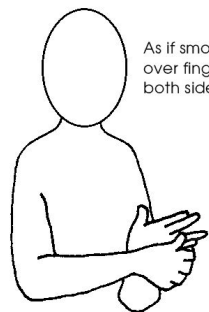
Email: kmartin@charltonprimary.school



This term, we held a coffee morning with NELFT's Emotional Wellbeing Team. The Emotional Wellbeing Team support children with their mental health and emotional wellbeing. If you were unable to attend, but would like to know more about their services, please follow this [link](#). Throughout this term, the Emotional Wellbeing Team have also been running a workshop with our Starlings called "Emotional Explorers". Next term, it's the Robins turn with the Emotional Wellbeing Team running a workshop to develop understanding their emotions.

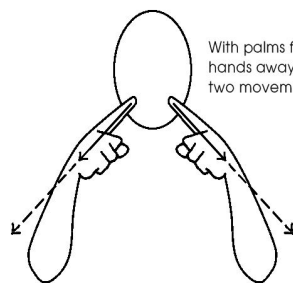
Finally, we have started exploring Makaton. Makaton is a communication programme that uses signs alongside speech to support communication and understanding. Using signs alongside speech can help children understand what we are saying as we are giving them extra visual cues.

Here are two signs that I know our children will be using a lot this half term.



As if smoothing glove over fingers. Repeat both sides for plural

Gloves



With palms facing, bring hands away from mouth in two movements

Teacher

Attendance:

Duckling	85.6%	Jackdaw	94.2%
Wren	96%	Starling	94.5%
Robin	96.3%	Owl	92.5%
Swan	88.1%	Whole School	93.6%

Certificates:



Congratulations to the following children who have been awarded a certificate. Well done!

Duckling:	Oscar, Myla and Amelia G
Wren:	Jude and Freya
Robin:	Harrison and Amber
Swan:	Emilly and Diana
Jackdaw:	Asiya and Maxi
Starling:	Reggie and Lexi
Owl:	Ruby and Reggi-k

House Points:

<u>Diamonds</u>	<u>Emeralds</u>	<u>Rubies</u>	<u>Sapphires</u>
487	421	541	453

Congratulations to **Rubies**

Reminders:

Named Uniform

This term we seem to have a large pile of leftover uniform and unfortunately these items have no names on them which makes it difficult to return to the correct child. Please could you ensure that all uniform is named and checked regularly to ensure the name is still clear and visible.

Road Safety

Please ensure that you use the crossing, as we have been made aware of incidents of children crossing the road unsafely.

Attendance

Regular attendance is essential for your child's learning and well-being. The attendance target is 96%. Please be aware that holidays in term time will usually be unauthorised and a referral may be made to KCC for a Penalty Notice. Please see our Attendance Policy (on the website) for further guidance. Please ensure that you phone the Office to inform of your child's absence by 9:30am.

Communication

Please email (office@charltonprimary.school) or phone the office with any queries or to arrange an appointment with your child's teacher.

Collection from school

A reminder that all children, apart from Year 6, need to be collected from school by an adult. Year 6 children can walk home alone if their parents have given permission. These Year 6 children will be given a pass. Safeguarding is our highest priority. If parents have arranged for another adult to collect their child, the office must be informed and a message will be passed to the class teacher. Thank you for your support with keeping our children safe.

Morning Gate

Just a reminder that parents are not to enter the school grounds during morning drop off.

Please see the prices below for the Around Care Clubs that we offer, we have additional times for both Breakfast and After School clubs:

Early Birds Club	<u>Additional Time</u> 7:30am – 8:35am	Full Price - £4.50 Pupil Premium - £2.25 Sibling Price - £2.25
	8:00am – 8:35am	Full Price - £3 Pupil Premium - £1.50 Sibling Price - £1.50
	<u>Early Drop Off</u> 8:20am – 8:35am	£1 Not eligible for Pupil Premium or Sibling discount
After School Club	3:15pm – 5:00pm	Full Price - £6 Pupil Premium - £3 Sibling Price - £3
	<u>Additional Time</u> 3:15pm – 5:30pm Working parents only	Full Price - £8 Pupil Premium - £4 Sibling Price - £4 (Snack will be provided)

Swimming in Term 2—Year 5

Wednesday 3rd December 2025

Wednesday 10th December 2025

Diary Dates

Date	Event	Year groups
Wednesday 3rd December	Walk-in Wednesday (3:00—3:15)	Whole School
Friday 5th December	Pyjama/ Onesie day for The Red Cross (£1 cash donation)	Whole School
Wednesday 10th December	Christmas Dinner	Open for Whole School to book
Wednesday 10th December	KS1 Nativity—2pm—Charlton Church	Duckling, Wren and Robin Classes
Friday 12th December	Christmas Jumper Day	Whole School
Friday 12th December	Years 3 and 4 TTRS Competition	Swan and Jackdaw Classes
Friday 12th December	PTA Christmas Fair	Whole School
Monday 15th December	Rocksteady Concert at 9:00am	Parents of Rocksteady children
Tuesday 16th December	KS2 Christingle Service—2pm—Charlton Church	Swan, Jackdaw, Starling and Owl Classes
Wednesday 17th December	Jack and the Beanstalk Pantomime at the Tower Theatre	Whole School
Thursday 18th December	Class Christmas Parties (children can wear Party clothes)	Whole School
Friday 19th December	Last Day of Term 2	Whole School

Charlton School
Christmas Fayre
12TH DECEMBER 2.30PM - 4PM

Rainbow
Roulette Games
Face Painting
Tattoos
Food
Stalls

Made with PosterMyWall.com

Clubs for Term 2

Monday	Lego Club—Ms Lanigan—Years 3 and 4	1st December
Tuesday	Lego Club—Ms Lanigan—Years 1 and 2	2nd December
Thursday	Card Making Club—Mrs Beaman— Years 3, 4, 5 and 6	4th December
Thursday	Dungeons and Dragons Club—Mr Ives—Years 5 and 6 There is a limit of 6 spaces in this club	4th December

PE for Term 2

Please see below for this term's PE schedule:

Monday	Year 3
Tuesday	Year 4
Wednesday	Year 1 Year 5 Swimming
Thursday	Year 5
Friday	Reception Year 2 Year 6

Children can still come to school wearing their PE kits consisting of:

White t-shirt

Navy blue/ black shorts/ tracksuit bottoms/ leggings

Trainers

School jumper/ fleece/ hoody

Jewellery: only studs are to be worn in school. Hoops are unsafe at school due to the risk of tearing during playtimes and games. Children/ parents will be asked to remove hoops

GIRLS' RUGBY

EVERY SUNDAY

AT THE SHARK TANK

COME ALONG AND JOIN US!
NO EXPERIENCE NEEDED
JUST BRING YOUR ENERGY!

U8-10 (YR 3-5)
10:15-11:15

U11-13 (YR 6-8)
11:30-12:30

Find us on Facebook (@DoverSharksGirls)
or for more information email us at

Year 4 Visit to The Base

Our Jackdaws had an amazing trip to The Base on Tuesday 25th November, and the children had an absolutely awesome time! It was a wonderful experience for them—especially getting to explore and experiment on the sprung floor, which they loved. There was so much joy, movement, and curiosity in the room that we're already thinking another visit will definitely be needed!

A huge thank you to The Base, home of the Vista Twisters, for generously allowing us to use their fantastic facilities free of charge. We're incredibly grateful for their support.

We also wanted to say a massive thank you to Mrs Eades for accompanying us on the trip.

We'd also encourage parents to consider The Base for out-of-school clubs—it's a brilliant environment for children to stay active, build confidence, and have fun.



CHARLTON CHURCH
ST ALPHEGE ROAD, DOVER

PRESENT

THE ANNUAL
CHRISTINGLE SERVICE

30TH NOVEMBER 2025 – 4pm

WITH REVD MELISSA CARTER

Collection for the Children's Society

ALL ARE WELCOME

The poster features a background of a park path with trees. At the top left is the Brockhill Country Park logo, which includes a stylized tree and the text 'BROCKHILL COUNTRY PARK'. At the top right is the 'Kent Country Parks' logo. Two cartoon elves are shown: one on the left holding a large red and white striped candy cane, and one on the right standing on a smaller one. The main title 'Naughty Elf Quest' is written in large, red, bubbly letters. Below the title, a green banner reads 'THE BROCKHILL RANGERS NEED YOUR HELP! NAUGHTY ELVES HAVE TAKEN OVER THE PARK!'. The dates 'Sat 20th Dec Sun 21st Dec Mon 22nd Dec' are listed in a brown, hand-drawn font. A white banner with green text says 'SAW A WOODEN DECORATION | GET CREATIVE IN OUR ELF WORKSHOP | SET OUT ON A QUEST ACROSS THE PARK | CLAIM YOUR PRIZE!'. A price tag graphic shows '£7.50 per child' and '£1.50 per adult*' with a note '*includes a wooden decoration to make and take home'. At the bottom left is a QR code with the text 'SCAN ME' below it. At the bottom right is the Kent County Council logo with the text 'TICKETS MUST BE BOOKED IN ADVANCE SCAN THE QR CODE OR HEAD TO OUR WEBSITE'.

BROCKHILL COUNTRY PARK

Kent Country Parks

Naughty Elf Quest

THE BROCKHILL RANGERS NEED YOUR HELP!
NAUGHTY ELVES HAVE TAKEN OVER THE PARK!

Sat 20th Dec Sun 21st Dec Mon 22nd Dec

SAW A WOODEN DECORATION | GET CREATIVE IN OUR ELF WORKSHOP | SET OUT ON A QUEST ACROSS THE PARK | CLAIM YOUR PRIZE!

£7.50 per child
£1.50 per adult*
*includes a wooden decoration to make and take home

SCAN ME

TICKETS MUST BE BOOKED IN ADVANCE
SCAN THE QR CODE OR HEAD TO OUR WEBSITE

Kent County Council
kent.gov.uk



The Brockhill Rangers

CHRISTMAS CAMPFIRE SING ALONG

Friday 19th December

Start your festive celebrations at Brockhill
3:30pm -5pm



£2.50pp
(includes parking)

WRAP UP WARM, POP ON YOUR WELLIES AND GET YOUR SINGING VOICES READY, GATHER AROUND THE CAMPFIRE AS THE SUN SETS ON THE PARK.

OUR CAMPFIRE CAFE WILL BE OPEN, SERVING HOT DRINKS, TOAST-ABLE TREATS AND MAYBE EVEN A FEW MULLED WINES...



SCAN ME



TICKETS MUST BE BOOKED IN ADVANCE
SCAN THE QR CODE OR HEAD TO OUR
WEBSITE



Kent Country Parks

Wreath Making



CREATE A FRESH CHRISTMAS WREATH AND
TAKE A LITTLE PIECE OF BROCKHILL HOME
WITH YOU FOR CHRISTMAS!

SUNDAY 30TH NOVEMBER
SATURDAY 6TH DECEMBER
FRIDAY 12TH DECEMBER
10am-12pm or 1pm-3pm

£25
PER
PERSON

Foraging | Willow weaving | Campfire |
Refreshments

Cosy up in our Badger room
& Get stuck into Christmas



SCAN ME

TICKETS MUST BE BOOKED IN ADVANCE
SCAN THE QR CODE OR HEAD TO OUR
WEBSITE TO FIND OUT MORE

