



# Charlton Church of England Primary School

## Newsletter

*Listening. Encouraging. Forgiving. Thoughtful. Patient. Sharing.*

**'Transforming lives through God's embrace.'**



**Date:**

Friday 19th December 2025

**Issue Number:**

5

Dear Parents and Carers,

As we approach the end of what has been a long and rewarding term, I wanted to take a moment to share some wonderful highlights from the term.

Our Christmas celebrations have been truly magical. The Nativity was a testament to the hard work of our dedicated staff and the incredible talent of our children. Their performance was nothing short of remarkable, capturing the spirit of the season with warmth and joy, and the odd chuckle.

I must extend huge thanks to our Parent Teacher Association (PTA), and particularly to Lisa, who has worked tirelessly to bring our recent events together. The Christmas Fair was a fantastic success, bringing our school community together in true festive spirit.

The Key Stage 2 Christingle service was another highlight. There is something truly special about the room falling silent as the lights go out and the candles are lit - a powerful reminder of the meaning of the season.

Our whole-school trip to the pantomime was, as always, a highlight of the term. The joy of having the entire theatre to ourselves and sharing collective laughter is an experience our pupils will long remember. The performance was hilarious and brought smiles to everyone's faces. I think some of the staff would have appreciated some ear defenders!

It has been a long term, and our children are definitely ready for a well-deserved break. They have worked hard, shown tremendous resilience, and made us incredibly proud.

All that remains is to wish you all a very Merry Christmas. I hope this time brings peace, joy, and love to you and your families.

Sally-Anne Pettersen  
Headteacher

### Baby and Toddler Group

**Baby and Toddler Group will run every Thursday morning during term time between 9am—10am**



- ◆ Drink and snack for the little ones
- ◆ Activities, games and toys
- ◆ A chance to chat and meet new people



**The first session will be held on Thursday 26th September**

**Please keep spreading the word—this is open to the whole community so please do bring friends and relatives with little ones.**

*Mrs Hazelden and Miss Kew*



Pastoral Lead

### Message from Miss Kew

Contact details:

Phone: school number and select line 2

Email: [kkew@charltonprimary.school](mailto:kkew@charltonprimary.school)



As the Pastoral Lead at Charlton, I am available to support families in many different ways, whether this be any concerns for your child or your own wellbeing, difficulties at home and financial support which could consist of:

Food Bank: If anyone would like to access the food bank please do contact Miss Kew. Fuel Bank: This is accessible for pre-paid meters. Again, please do contact Miss Kew if you would like support with this.

Any support offered to you will always be treated with the strictest confidence.

## SEND Space with Mrs Martin

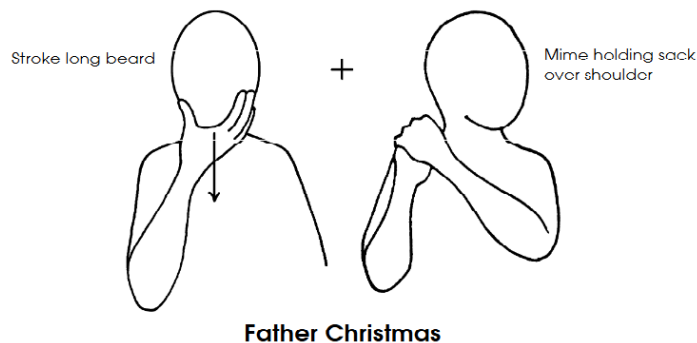
Email: [kmartin@charltonprimary.school](mailto:kmartin@charltonprimary.school)



This term, we held a coffee morning with NELFT’s Emotional Wellbeing Team. The Emotional Wellbeing Team support children with their mental health and emotional wellbeing. If you were unable to attend, but would like to know more about their services, please follow this [link](#). Throughout this term, the Emotional Wellbeing Team have also been running a workshop with our Starlings called “Emotional Explorers”. Next term, it’s the Robins turn with the Emotional Wellbeing Team running a workshop to develop understanding their emotions.

Finally, we have started exploring Makaton. Makaton is a communication programme that uses signs alongside speech to support communication and understanding. Using signs alongside speech can help children understand what we are saying as we are giving them extra visual cues.

Here are two signs that I know our children will be using a lot this half term.



## Attendance:

Duckling	90.5%	Jackdaw	91.9%
Wren	91.7%	Starling	87.2%
Robin	93.1%	Owl	88.9%
Swan	82.2%	Whole School	89.2%

## Certificates:



**Congratulations to the following children who have been awarded a certificate. Well done!**

- Duckling: Reggie C, Awab and Henry D
- Wren: Daisy, Jeanne-Maria and Freddie
- Robin: Imal, Willow and Idrees
- Swan: River, Gustav and Alfie B
- Jackdaw: Beau, Jacob Wr and Gracie
- Starling: Kez, Rupert and Obie
- Owl: Daisy, Orlagh and Keyra

## House Points:

<u>Diamonds</u>	<u>Emeralds</u>	<u>Rubies</u>	<u>Sapphires</u>
351	427	330	280

**Congratulations to Emeralds**

### Reminders:

#### Named Uniform

This term we seem to have a large pile of leftover uniform and unfortunately these items have no names on them which makes it difficult to return to the correct child. Please could you ensure that all uniform is named and checked regularly to ensure the name is still clear and visible.

#### Road Safety

Please ensure that you use the crossing, as we have been made aware of incidents of children crossing the road unsafely.

#### Attendance

Regular attendance is essential for your child's learning and well-being. The attendance target is 96%. Please be aware that holidays in term time will usually be unauthorised and a referral may be made to KCC for a Penalty Notice. Please see our Attendance Policy (on the website) for further guidance. Please ensure that you phone the Office to inform of your child's absence by 9:30am.

#### Communication

Please email ([office@charltonprimary.school](mailto:office@charltonprimary.school)) or phone the office with any queries or to arrange an appointment with your child's teacher.

#### Collection from school

A reminder that all children, apart from Year 6, need to be collected from school by an adult. Year 6 children can walk home alone if their parents have given permission. These Year 6 children will be given a pass. Safeguarding is our highest priority. If parents have arranged for another adult to collect their child, the office must be informed and a message will be passed to the class teacher. Thank you for your support with keeping our children safe.

#### Morning Gate

Just a reminder that parents are not to enter the school grounds during morning drop off.

Please see the prices below for the Around Care Clubs that we offer, we have additional times for both Breakfast and After School clubs:

Early Birds Club	<u>Additional Time</u> 7:30am – 8:35am	Full Price - £4.50 Pupil Premium - £2.25 Sibling Price - £2.25
	8:00am – 8:35am	Full Price - £3 Pupil Premium - £1.50 Sibling Price - £1.50
	<u>Early Drop Off</u> 8:20am – 8:35am	£1 Not eligible for Pupil Premium or Sibling discount
After School Club	3:15pm – 5:00pm	Full Price - £6 Pupil Premium - £3 Sibling Price - £3
	<u>Additional Time</u> 3:15pm – 5:30pm Working parents only	Full Price - £8 Pupil Premium - £4 Sibling Price - £4 (Snack will be provided)

## Diary Dates

Date	Event	Year groups
Friday 19th December	Last Day of Term 2	Whole School
Monday 5th January	First Day of Term 3	Whole School
Wednesday 7th January	Year 4 Swimming	Jackdaw Class
Wednesday 14th January	Year 4 Swimming	Jackdaw Class
Wednesday 21st January	Year 4 Swimming	Jackdaw Class
Wednesday 28th January	Year 4 Swimming	Jackdaw Class
Wednesday 4th February	Year 4 Swimming	Jackdaw Class
Friday 6th February	NSPCC Number Day	Whole School
Friday 6th February	Years 3 and 4 Times Tables Rock-stars competition	Swan and Jackdaw Classes
Wednesday 11th February	Year 4 Swimming	Jackdaw Class
Friday 13th February	Last Day of Term 3	Whole School

## Online Parent Workshops

Aimed at parents of children in  
Primary school



### Understanding your Child's Behaviour

19/01/2026 10:30 -12:30pm

[Understanding Your Child's Behaviour | Meeting-Join | Microsoft Teams](#)



### Supporting Your Child with Worries & Fears

02/02/2026 10:30 -12:30pm

[Supporting Your Child with Worries & Fears | Meeting-Join | Microsoft Teams](#)



### Autism and Sleep

09/03/2026 12:30 – 13:30pm

[Autism and Sleep | Meeting-join | Microsoft Teams](#)



### Understanding Neurodiversity

24/03/2026 10:30 -12:30pm

[Understanding Neurodiversity | Meeting-Join | Microsoft Teams](#)

### Clubs for Term 3

Monday	Curling Club—Ms Lanigan—Years 1 and 2	12th January 19th January 26th January 2nd February 9th February
Monday	Board Game Club—Miss Mitten—Years 5 and 6	12th January 19th January 26th January 2nd February 9th February
Monday	Faith and Belief Club (FAB Club)—Reverend Melissa and Mrs Tyler—Whole School	12th January 19th January 26th January 2nd February 9th February
Tuesday	Lego Club—Ms Lanigan—Years 5 and 6	13th January 20th January 27th January 3rd February 10th February
Tuesday	Story Club—Mrs Ross—Years 1 and 2	13th January 20th January 27th January 3rd February 10th February

### PE for Term 3

Please see below for this term's PE schedule:

Monday	Year 3
Tuesday	Year 4
Wednesday	Year 1 Year 4 Swimming
Thursday	Year 5
Friday	Reception Year 2 Year 6

Children can still come to school wearing their PE kits consisting of:

White t-shirt

Navy blue/ black shorts/ tracksuit bottoms/ leggings

Trainers

School jumper/ fleece/ hoody

Jewellery: only studs are to be worn in school. Hoops are unsafe at school due to the risk of tearing during playtimes and games. Children/ parents will be asked to remove hoops

WHO'S ON  
SANTA'S  
NAUGHTY  
LIST?



SUNDAY 4<sup>TH</sup> JANUARY  
AT 4PM!

LOLBEAR PRESENTS  
PANTO

# 7 DAYS TO SAVE CHRISTMAS!

LAUGH OUT  
LOUD!

SONGS

THE HILARIOUSLY  
FUNNY FAMILY SHOW



ACTION!



ADULTS £7, KIDS £2

BOOK HERE OR CASH ON THE DOOR

CHARLTON CHURCH, ST ALPHEGE ROAD,  
DOVER CT16 2PU

ENQUIRIES 07578220209



WHERE?



ST PETER & ST PAUL'S,  
CHARLTON CHURCH,  
ST ALPHEGE ROAD,  
DOVER CT16 2PU



24/12

MIDNIGHT MASS

WED

11.30PM MAGICAL MIDNIGHT MASS  
WITH CAROLS, CHOIR AND CANDLES  
AT THE BEAUTIFUL HIGH ALTAR



24/12

CRIB SERVICE

WED

4PM CHILDREN HELP TO CREATE THE  
LOVELY CRIB SCENE ON THE EVE OF  
CHRIST'S BIRTH



Come and join our

## Learn to Swim at SafelySwim







to gain confidence, grow their skills and enjoy learning to swim!



### Joining Our Learn to Swim

Our lessons offer a calm space for children to build confidence, learn water safety and start swimming. The SafelySwim team guide each swimmer through weekly sessions, helping them progress at a pace that suits them.

### Entry Details

-  Build water confidence with supported activities
-  Learn safe entry, floating and basic movement skills
-  Develop balance, coordination and water awareness
-  Ideal for complete beginners and nervous swimmers
-  Held at venues around Dover
-  Easy online booking

**Get Started Today!**

Visit our website  
[join.safelyswim.co.uk](https://join.safelyswim.co.uk)



Kent Libraries

# Christmas Activities

## Ash Library

Monday 22 December,  
Midday – 12.45pm

**Make a Reindeer Xmas Tree Decoration** Suitable for ages 3 – 11 years. Booking required, contact [ashlibrary@kent.gov.uk](mailto:ashlibrary@kent.gov.uk) or call 01304 812440

## Deal Library

Tuesday, 23 December  
11am- 13.30pm

**Cracking Christmas Craft** Suitable for ages 4 – 11 years. No booking required, for information contact [deallibrary@kent.gov.uk](mailto:deallibrary@kent.gov.uk) or call 03000 413131

## Dover Library

Saturday, 20 December  
11am – 12.30pm

**Children's Christmas Craft and Activities** Suitable for ages 4 – 11 years. No booking required. For information contact [doverlibrary@kent.gov.uk](mailto:doverlibrary@kent.gov.uk) or call 03000 413131

## Sandwich Library

Saturday, 13 & 20 Dec,  
10.30am -11.30am

**Christmas Crafts and Story Time** Suitable for 3 – 11 years. No booking required. For information contact [sandwichlibrary@kent.gov.uk](mailto:sandwichlibrary@kent.gov.uk) or call 03000 413131

## Deal Library

Until 19 December,  
during opening hours

**Christmas Jumper Swap**  
Free! Get festive and go green! Declutter and donate, or pop in to pick up a new outfit no donation necessary.

Scan the QR code or visit our website for more information about these activities, and to explore what else is on offer in libraries near you.



[kent.gov.uk/libraries](http://kent.gov.uk/libraries)



03000 41 31 31



Free craft activity

Make a doll house  
Christmas dinner

Saturday 20th December  
drop-in 10:00 - 3:00  
at Dover Museum



This workshop is suitable for children over the age of 6. All children must be accompanied by a responsible adult at all times. If the workshop is busy, you may be required to wait until seats are free or to come back later. As we are using clay, you may wish to bring an apron or old shirt. An alternative colouring activity will also be available for younger children.



The Brockhill Rangers

# CHRISTMAS CAMPFIRE SING ALONG

Friday 19th December

Start your festive celebrations at Brockhill  
3:30pm - 5pm



£2.50pp  
(includes parking)

WRAP UP WARM, POP ON YOUR WELLIES AND GET YOUR SINGING VOICES READY, GATHER AROUND THE CAMPFIRE AS THE SUN SETS ON THE PARK.

OUR CAMPFIRE CAFE WILL BE OPEN, SERVING HOT DRINKS, TOAST-ABLE TREATS AND MAYBE EVEN A FEW MULLED WINES...



SCAN ME



TICKETS MUST BE BOOKED IN ADVANCE  
SCAN THE QR CODE OR HEAD TO OUR WEBSITE



Kent Country Parks

# Naughty Elf Quest

THE BROCKHILL RANGERS NEED YOUR HELP!  
NAUGHTY ELVES HAVE TAKEN OVER THE PARK!

Sat 20th Dec Sun 21st Dec Mon 22nd Dec

SAW A WOODEN DECORATION | GET CREATIVE IN OUR ELF WORKSHOP | SET OUT ON A QUEST ACROSS THE PARK | CLAIM YOUR PRIZE!



SCAN ME

£7.50 per child  
£1.50 per adult\*  
\*includes a wooden decoration to make and take home

TICKETS MUST BE BOOKED IN ADVANCE  
SCAN THE QR CODE OR HEAD TO OUR WEBSITE

